

The Personal Computer and Entrepreneurship

Robert W. Fairlie
University of California, Santa Cruz

January 2005

Figure 3
Percent of Individuals with Access to Home Computer by Age
Current Population Surveys, 1997-2001

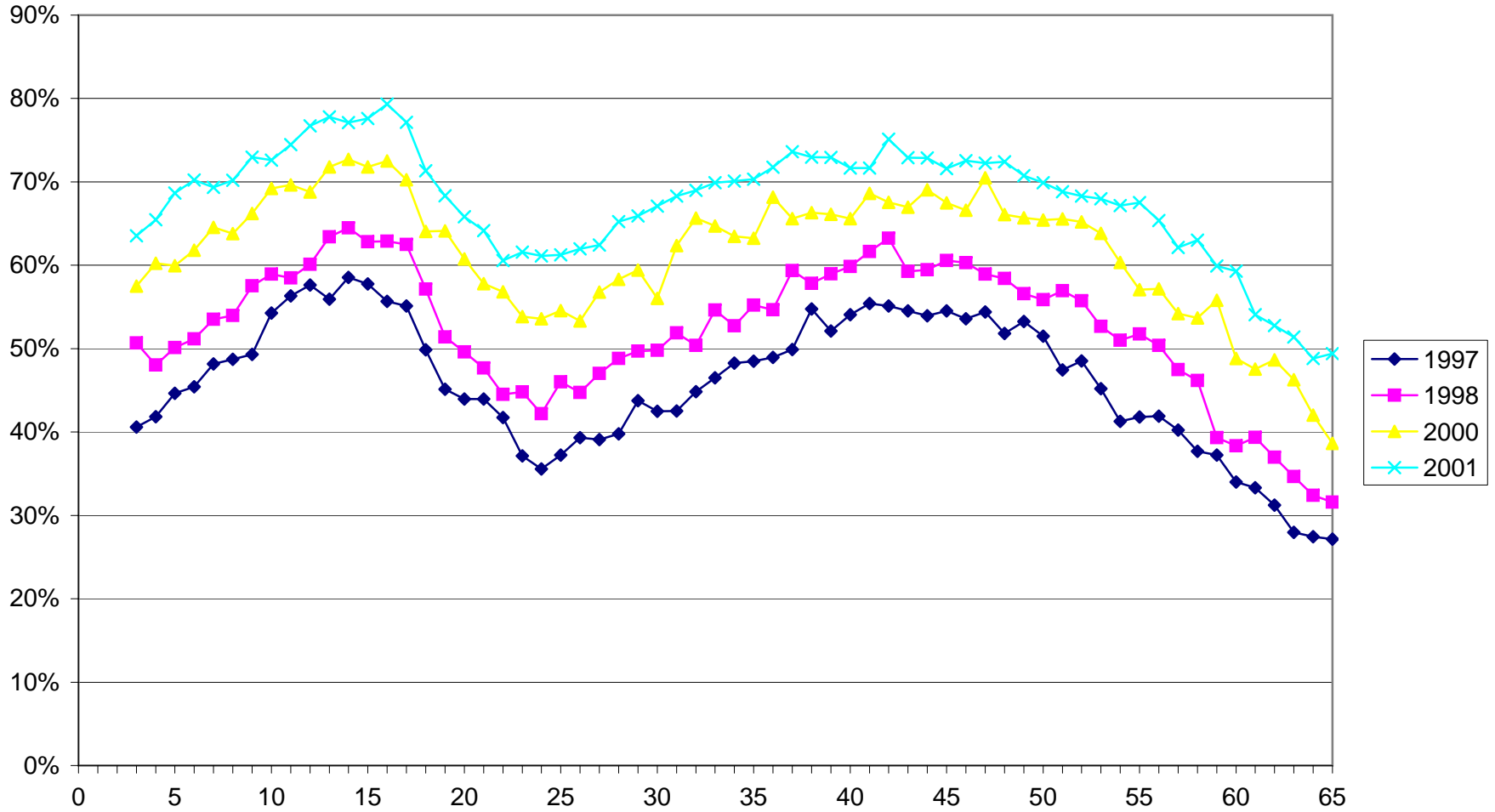


Table 3A
 Additional Probit Regressions for Entrepreneurship - Men
 Current Population Surveys (1997-2001)

Explanatory Variables	(1)	(2)	(3)	(4)
Black	-0.2193 (0.0563)	-0.2114 (0.0602)	-0.2196 (0.0566)	-0.2189 (0.0563)
Latino	-0.2506 (0.0609)	-0.2739 (0.0665)	-0.2572 (0.0615)	-0.2504 (0.0609)
Native American	-0.1143 (0.1251)	-0.1313 (0.1359)	-0.1126 (0.1251)	-0.1143 (0.1251)
Asian	-0.2036 (0.0773)	-0.1459 (0.0833)	-0.1964 (0.0775)	-0.2035 (0.0773)
Immigrant	0.2141 (0.0506)	0.2248 (0.0552)	0.2099 (0.0509)	0.2141 (0.0506)
Age	0.0153 (0.0092)	0.0190 (0.0100)	0.0143 (0.0093)	0.0153 (0.0092)
Age squared	-0.0002 (0.0001)	-0.0002 (0.0001)	-0.0002 (0.0001)	-0.0002 (0.0001)
Number of children	-0.0588 (0.0249)	-0.0717 (0.0272)	-0.0581 (0.0251)	-0.0588 (0.0249)
Number of children squared	0.0157 (0.0057)	0.0182 (0.0062)	0.0158 (0.0058)	0.0157 (0.0057)
Married	0.1337 (0.0427)	0.1399 (0.0461)	0.1338 (0.0429)	0.1339 (0.0427)
Previously married	0.1664 (0.0540)	0.1481 (0.0582)	0.1592 (0.0545)	0.1667 (0.0541)
High School graduate	0.0664 (0.0504)	0.0763 (0.0533)	0.0678 (0.0506)	0.0658 (0.0505)
Some college	0.0681 (0.0527)	0.0645 (0.0563)	0.0683 (0.0529)	0.0668 (0.0530)
College graduate	0.0822 (0.0562)	0.0827 (0.0606)	0.0803 (0.0565)	0.0938 (0.0746)
Graduate school	0.1189 (0.0619)	0.1137 (0.0677)	0.1244 (0.0623)	0.1311 (0.0806)
Family income: missing	0.0493 (0.0833)	0.0824 (0.0895)	0.0461 (0.0833)	0.0488 (0.0833)
Family income: \$10,000 to \$15,000	0.0381 (0.0991)	0.0576 (0.1059)	0.0374 (0.0990)	0.0382 (0.0991)
Family income: \$15,000 to \$20,000	0.0560 (0.0977)	0.0965 (0.1035)	0.0476 (0.0980)	0.0561 (0.0977)
Family income: \$20,000 to \$25,000	-0.0449 (0.0924)	0.0047 (0.0981)	-0.0457 (0.0924)	-0.0451 (0.0924)

(continued)

Table 3A (continued)
Additional Probit Regressions for Entrepreneurship - Men

Explanatory Variables	(1)	(2)	(3)	(4)
Family income: \$25,000 to \$30,000	-0.0597 (0.0914)	-0.0164 (0.0976)	-0.0669 (0.0916)	-0.0600 (0.0914)
Family income: \$30,000 to \$35,000	-0.1618 (0.0923)	-0.1468 (0.0996)	-0.1606 (0.0924)	-0.1621 (0.0924)
Family income: \$35,000 to \$40,000	-0.1641 (0.0917)	-0.1082 (0.0976)	-0.1630 (0.0917)	-0.1645 (0.0917)
Family income: \$40,000 to \$50,000	-0.1566 (0.0843)	-0.1656 (0.0918)	-0.1662 (0.0845)	-0.1573 (0.0844)
Family income: \$50,000 to \$60,000	-0.1685 (0.0854)	-0.1511 (0.0926)	-0.1755 (0.0856)	-0.1693 (0.0854)
Family income: \$60,000 to \$75,000	-0.2494 (0.0867)	-0.2486 (0.0946)	-0.2609 (0.0870)	-0.2500 (0.0867)
Family income: more than \$75,000	0.0720 (0.0808)	0.0933 (0.0877)	0.0640 (0.0809)	0.0718 (0.0808)
Home owner	-0.0395 (0.0365)	-0.0303 (0.0395)	-0.0372 (0.0367)	-0.0395 (0.0365)
Access to a home computer	0.0541 (0.0311)	0.0470 (0.0332)	0.0445 (0.0313)	0.0578 (0.0348)
Marginal effect	0.0034	0.0029	0.0028	0.0036
Home computer*college graduate				-0.0162 0.0689
Mean of dependent variable	0.0299	0.0292	0.0295	0.0299
Log Likelihood value	-5,265.73	-4,397.10	-5,190.94	-5,265.70
Sample size	39,972	34,055	39,824	39,972

Notes: (1) See notes to Table 2A. (2) Specification 2 removes individuals with newest home computer purchased in the first year surveyed. (3) Specification 3 excludes individuals with home computers owned by a home business.

Table 3B
 Additional Probit Regressions for Entrepreneurship - Women
 Current Population Surveys (1997-2001)

Explanatory Variables	(1)	(2)	(3)	(4)
Black	-0.1771 (0.0676)	-0.1910 (0.0734)	-0.1709 (0.0677)	-0.1767 (0.0676)
Latino	-0.3265 (0.0812)	-0.3940 (0.0914)	-0.3237 (0.0815)	-0.3262 (0.0812)
Native American	-0.1140 (0.1414)	-0.1793 (0.1596)	-0.1105 (0.1413)	-0.1136 (0.1414)
Asian	-0.3879 (0.1062)	-0.3531 (0.1151)	-0.4016 (0.1084)	-0.3881 (0.1062)
Immigrant	0.1511 (0.0638)	0.1278 (0.0709)	0.1480 (0.0645)	0.1508 (0.0638)
Age	0.0128 (0.0115)	0.0133 (0.0126)	0.0125 (0.0116)	0.0126 (0.0115)
Age squared	-0.0001 (0.0001)	-0.0001 (0.0001)	-0.0001 (0.0001)	-0.0001 (0.0001)
Number of children	-0.0458 (0.0333)	-0.0370 (0.0370)	-0.0473 (0.0334)	-0.0455 (0.0333)
Number of children squared	0.0032 (0.0087)	0.0020 (0.0096)	0.0039 (0.0086)	0.0032 (0.0087)
Married	0.2401 (0.0606)	0.2870 (0.0674)	0.2434 (0.0611)	0.2414 (0.0607)
Previously married	0.1781 (0.0693)	0.1993 (0.0764)	0.1852 (0.0697)	0.1792 (0.0694)
High School graduate	0.0015 (0.0635)	-0.0118 (0.0672)	0.0062 (0.0640)	0.0002 (0.0636)
Some college	-0.0583 (0.0663)	-0.0633 (0.0706)	-0.0502 (0.0668)	-0.0607 (0.0666)
College graduate	-0.0222 (0.0707)	-0.0438 (0.0764)	-0.0285 (0.0716)	0.0060 (0.0972)
Graduate school	0.0290 (0.0796)	0.0730 (0.0857)	0.0396 (0.0804)	0.0582 (0.1058)
Family income: missing	-0.0323 (0.0931)	-0.0207 (0.0991)	-0.0375 (0.0935)	-0.0339 (0.0932)
Family income: \$10,000 to \$15,000	-0.0686 (0.1105)	-0.0329 (0.1151)	-0.0642 (0.1104)	-0.0690 (0.1105)
Family income: \$15,000 to \$20,000	-0.0965 (0.1122)	-0.1168 (0.1203)	-0.1101 (0.1131)	-0.0968 (0.1122)
Family income: \$20,000 to \$25,000	-0.0054 (0.0996)	0.0000 (0.1056)	-0.0012 (0.0997)	-0.0064 (0.0997)

(continued)

Table 3B (continued)
Additional Probit Regressions for Entrepreneurship - Women

Explanatory Variables	(1)	(2)	(3)	(4)
Family income: \$25,000 to \$30,000	-0.2486 (0.1084)	-0.2397 (0.1151)	-0.2416 (0.1084)	-0.2495 (0.1084)
Family income: \$30,000 to \$35,000	-0.0879 (0.0998)	-0.0565 (0.1052)	-0.0804 (0.0998)	-0.0894 (0.0998)
Family income: \$35,000 to \$40,000	-0.1945 (0.1042)	-0.2340 (0.1136)	-0.1985 (0.1048)	-0.1961 (0.1043)
Family income: \$40,000 to \$50,000	-0.1591 (0.0941)	-0.1724 (0.1014)	-0.1542 (0.0943)	-0.1612 (0.0943)
Family income: \$50,000 to \$60,000	-0.1645 (0.0952)	-0.1612 (0.1024)	-0.1605 (0.0955)	-0.1662 (0.0953)
Family income: \$60,000 to \$75,000	-0.2646 (0.0979)	-0.2343 (0.1046)	-0.2601 (0.0982)	-0.2661 (0.0980)
Family income: more than \$75,000	-0.0722 (0.0909)	-0.0939 (0.0981)	-0.0801 (0.0913)	-0.0732 (0.0909)
Home owner	0.0754 (0.0478)	0.0346 (0.0510)	0.0709 (0.0480)	0.0754 (0.0478)
Access to a home computer	0.1747 (0.0380)	0.1595 (0.0404)	0.1650 (0.0382)	0.1819 (0.0418)
Marginal effect	0.0055	0.0048	0.0051	0.0057
Home computer*college graduate				-0.0369 0.0885
Mean of dependent variable	0.0145	0.0137	0.0141	0.0145
Log Likelihood value	-3,472.56	-2,858.49	-3,393.54	-3472.47
Sample size	47,261	40,604	47,015	47,261

Note: See notes to Table 3A.

Appendix A
Sample Means and Standard Deviations for Main Analysis Variables
Current Population Surveys (1997-2001)

	Men		Women	
	Mean	Std. Dev.	Mean	Std. Dev.
Entrepreneurship rate	0.0299	0.1702	0.0145	0.1193
Black	0.0818	0.2741	0.1038	0.3051
Hispanic	0.0880	0.2834	0.0840	0.2774
Native American	0.0119	0.1086	0.0131	0.1136
Asian	0.0395	0.1948	0.0401	0.1963
Immigrant	0.1117	0.3150	0.1118	0.3151
Age	40.7680	11.0966	40.8964	10.8973
Married	0.6813	0.4660	0.6710	0.4698
Previously married	0.0997	0.2996	0.1623	0.3687
Number of children	0.9061	1.1511	0.9961	1.1752
High School graduate	0.3248	0.4683	0.3325	0.4711
Some college	0.2802	0.4491	0.2994	0.4580
College graduate	0.1895	0.3919	0.1918	0.3937
Graduate school	0.0987	0.2983	0.0815	0.2736
Family income: missing	0.0938	0.2915	0.0971	0.2961
Family income: \$10,000 to \$15,000	0.0325	0.1773	0.0430	0.2029
Family income: \$15,000 to \$20,000	0.0334	0.1797	0.0412	0.1987
Family income: \$20,000 to \$25,000	0.0493	0.2165	0.0547	0.2274
Family income: \$25,000 to \$30,000	0.0536	0.2252	0.0588	0.2353
Family income: \$30,000 to \$35,000	0.0595	0.2365	0.0612	0.2396
Family income: \$35,000 to \$40,000	0.0629	0.2429	0.0613	0.2400
Family income: \$40,000 to \$50,000	0.1131	0.3167	0.1044	0.3058
Family income: \$50,000 to \$60,000	0.1100	0.3129	0.1022	0.3029
Family income: \$60,000 to \$75,000	0.1191	0.3239	0.1067	0.3087
Family income: more than \$75,000	0.2404	0.4273	0.2222	0.4157
Home owner	0.7938	0.4046	0.7882	0.4086
Access to a home computer	0.6201	0.4854	0.6125	0.4872
Teenager present in household	0.2863	0.4520	0.3184	0.4659
Other household member uses the Internet at work	0.2014	0.4010	0.2155	0.4112
Other household member uses the Internet outside the home	0.3633	0.4810	0.3781	0.4849
Sample Size	39,972		47,261	

Notes: See Notes to Table 1.

Appendix B
Sample Entrepreneurship Rates by Exclusion Restrictions
Current Population Surveys (1997-2001)

	Entrepreneurship Rate	
	Men	Women
Teenager present in household	0.0286	0.0136
No teenager present in household	0.0306	0.0147
Sample Size	52,396	57,165
Other household member uses the Internet at work	0.0304	0.0171
No other household member uses the Internet at work	0.0299	0.0136
Sample Size	52,396	57,165
Other household member uses the Internet outside the home	0.0326	0.0177
No other household member uses the Internet outside the home	0.0308	0.0128
Sample Size	35,306	38,467

Notes: See Notes to Table 1.