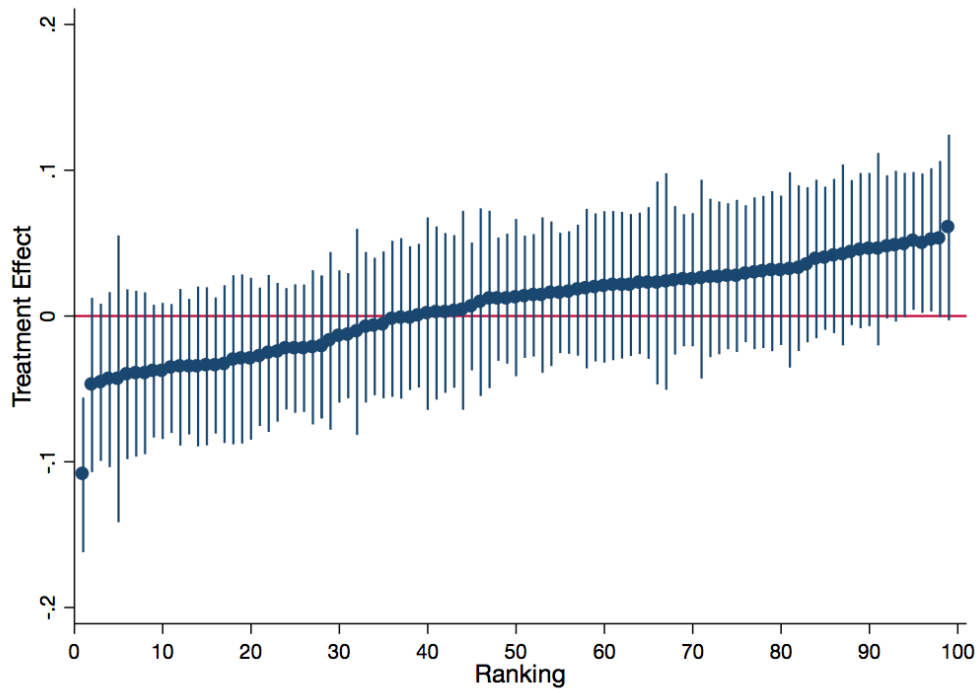


Online Supplement to "Closing the Productivity Gap: Improving Worker Productivity through Public Relative Performance Feedback and Validation of Best Practices"

Hummy Song, Anita L. Tucker, Karen L. Murrell, and David R. Vinson

2017

Figure A1: Placebo Tests of the Effect of the Intervention on Physician Productivity



Notes. Placebo intervention dates were randomly assigned 100 times. Each point and its whiskers (95% confidence intervals) correspond to an estimation of Equation (1) as described in section 4.1. The coefficient and confidence interval for the true data are represented on the far left (ranking 1).

Table A1: Alternate Model Specifications

Variables	(1) Linear DV	(2) No Washout Period	(3) Extended Time Frame	(4) Top/Bottom 2	(5) Top/Bottom 4	(6) Top/Bottom 5	(7) Interrupted Time Series
<i>Post X Treat</i>	-21.697*** (3.496)	-0.105*** (0.026)	-0.091** (0.028)	-0.082** (0.029)	-0.067* (0.027)	-0.072* (0.030)	
<i>Post X Treat X Top</i>				0.002 (0.031)	-0.237 (0.178)	-0.176 (0.094)	
<i>Post X Treat X Bottom</i>				-0.084** (0.029)	-0.049 (0.035)	-0.022 (0.034)	
<i>Post</i>							-0.089** (0.027)
<i>Time</i>							-0.002*** (0.000)
<i>Post X Time</i>							0.001 (0.001)
Time-varying controls	Yes	Yes	Yes	Yes	Yes	Yes	Yes
Day of week FE	Yes	Yes	Yes	Yes	Yes	Yes	Yes
Month-year FE	Yes	Yes	Yes	Yes	Yes	Yes	No
Physician FE	Yes	Yes	Yes	Yes	Yes	Yes	Yes
Observations	91,062	98,651	261,171	81,847	81,847	81,847	126,030
Adjusted R-squared	0.090	0.176	0.190	0.170	0.170	0.170	0.197

Notes. Column 1 is a fixed effects linear difference-in-differences model, Columns 2 - 6 are fixed effects log-linear difference-in-differences models, and Column 7 is a fixed effects log-linear interrupted time series model. All models are estimated at the patient encounter level. Controls not shown include ESI level, age, gender, current patient count, current patient count squared, total number of MDs on shift, arrival shift type, time of day, day of week, and month-year fixed effects, and physician fixed effects. Standard errors (in parentheses) are heteroskedasticity robust and clustered by physician. * $p < 0.05$, ** $p < 0.01$, *** $p < 0.001$.